

Army Transformation

AC/RC Integration

Today

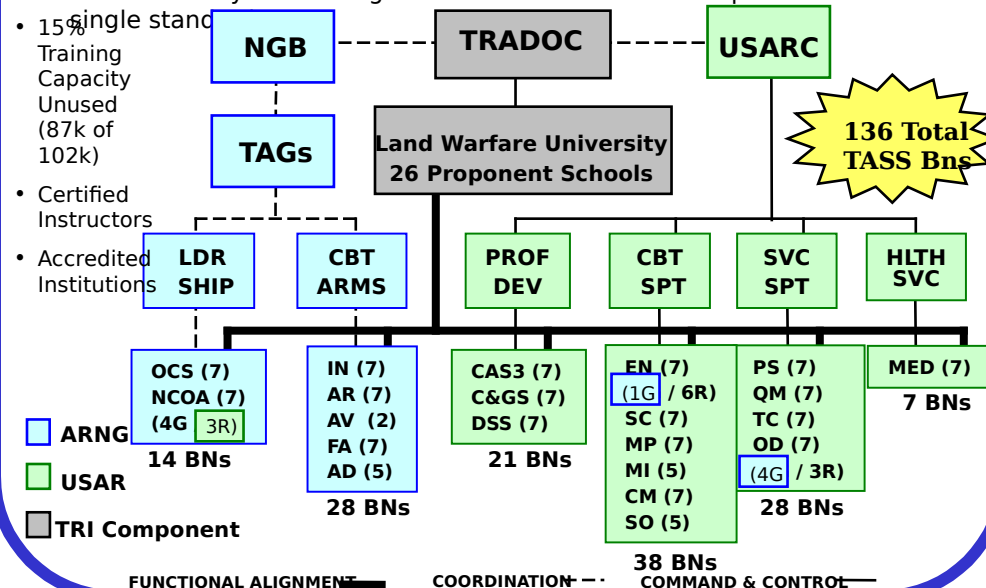
- Separate AC/RC school structure - Proponent Schools considered AC and The Army School System considered "RC"
- Limited RC augmentation of Proponent School IET/AIT Instructor Staff
- Redundancy in achieving common goals (Precommissioning, Accessions and NCO Academies)
- TRADOC lagging behind in training developments and simulation developments for RC competencies (CS and CSS)
- Limited Distance Learning products which are MOS producing or support P

Tomorrow

- Fully integrated AC/RC school structure, maximizing the resources of all The Army....AC soldiers routinely attending RC conducted training
- Training standards the same for both AC and RC in all The Army's training
- Leverage technology through Distance Learning to improve training readiness for Commanders
- Fully integrate the RC into the core TRADOC missions (Access the Force, Train the Force, and Combat Developments for DTLOMS)

TASS Mission

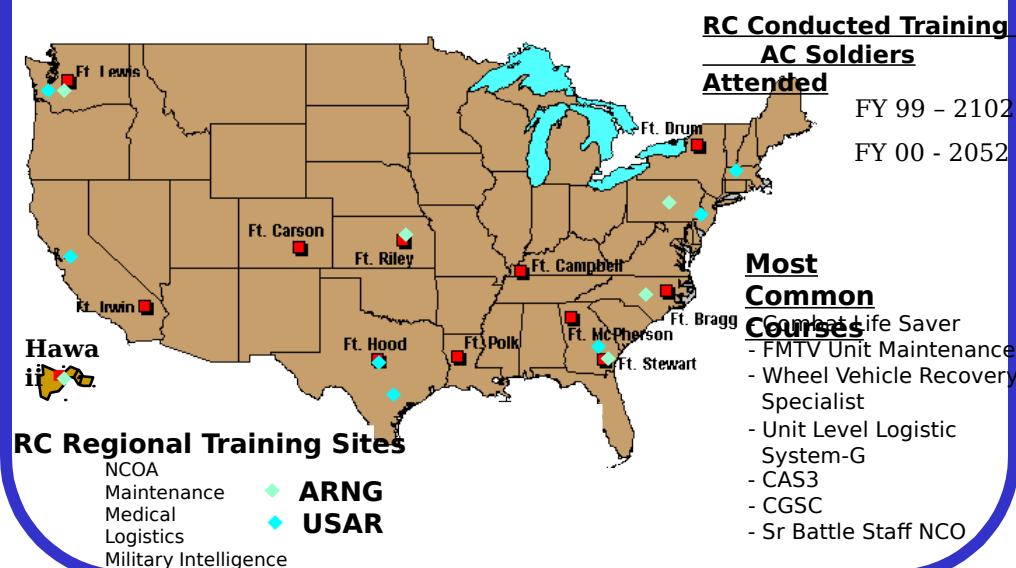
- Enhance Army Readiness through an efficient, effective, fully integrated, educational system that guarantees soldiers of all components are trained to a



AC/RC Training Enhancements:

- **Bring the training resources of The Army together through TASS**
- **Establish Tri-Component Institutions at RC Regional Training Sites on or close to AC installations**
- **Enhance RC training readiness through the establishment of Warfighting Centers**
- **Expand the role of RC support to IET/AIT and Precommissioning mission**

- RC conduct training scheduled specifically for AC attendance (PME, MOS reclassification and functional training)

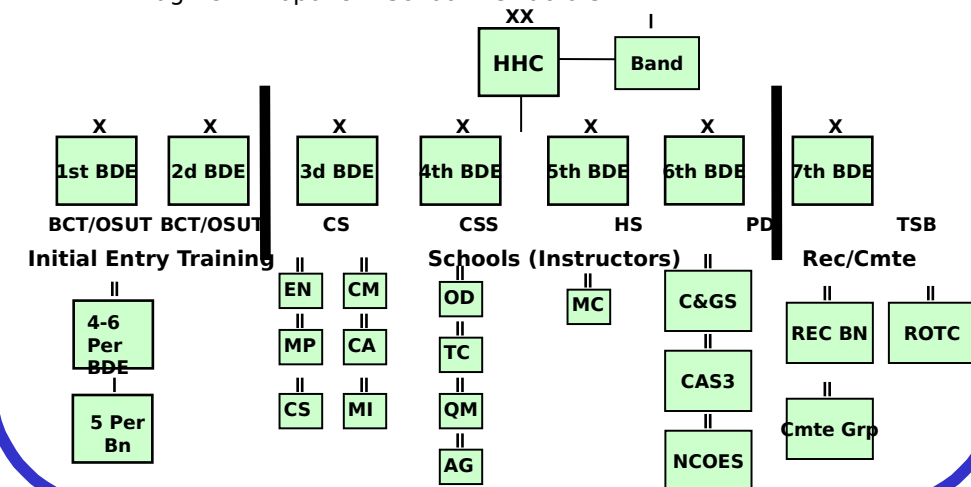


Warfighting Centers

- **Mission of a Warfighting Center (WFC).** Completes the post-mobilization training of maneuver brigade combat teams and DIV HQ proficiency
 - Conducts company team through brigade combat team training (live, virtual, and constructive)
 - Provides tough, realistic combined arms training (utilizing OC/Ts, OPFOR and company CALFEX) to assist company commanders, sergeants, soldiers, leaders and units
 - **Training Capabilities.**
 - Maneuver
 - Ten company level lanes w/OPFOR
 - BDE FTX with two maneuver BNs w/OPFOR
 - BN/BDE/DIV CPX: Simulation support exercise
 - CALFEX: Company Level (simultaneous with two BNs in box)
 - Ranges to maintain/increase crew level
 - Training Aids Devices Simulations and Simulators (TADSS)
- 6 Proposed Locations:**
Forts Stewart, Polk, Hood,
Riley, Carson and Lewis

Support of IET/AIT and Precommissioning Mis

- **Peace Time and Mobilization - 7 DIV(IT)s**
 - Conduct IET (BCT/OSUT)
 - Support Precommissioning training (ROTC and USMA)
 - Augment Reception Operations at USATC Installations
 - Augment Proponent School Instructors





Jump Start Key ARMY Transformation Initiatives....

FY03-07 Mini-POM

- ✓ **Establish Land Warfare University**
- ✓ **Establish Accessions Command**
- ✓ **Implement Intermediate Level Education (ILE)**
- ✓ **Establish Quality Assurance Office**
- ✓ **Implement Basic Officer Leader Course, Phase 1**
- ✓ **Expand One Station Unit Training**